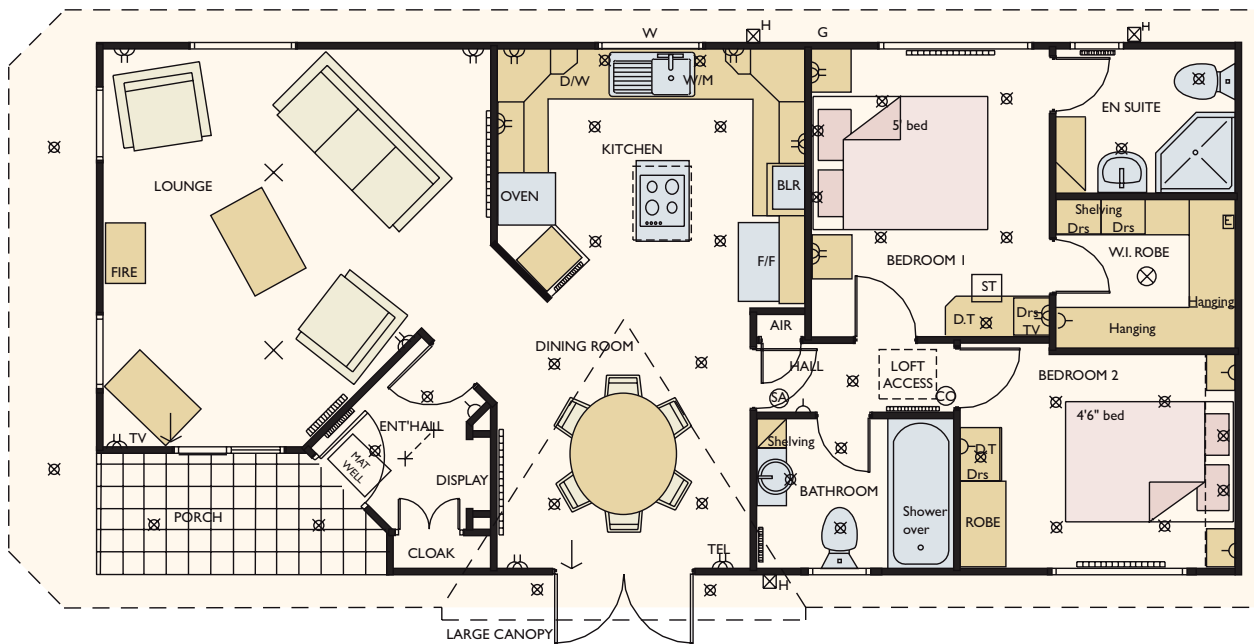


# 42'6"

# the savannah



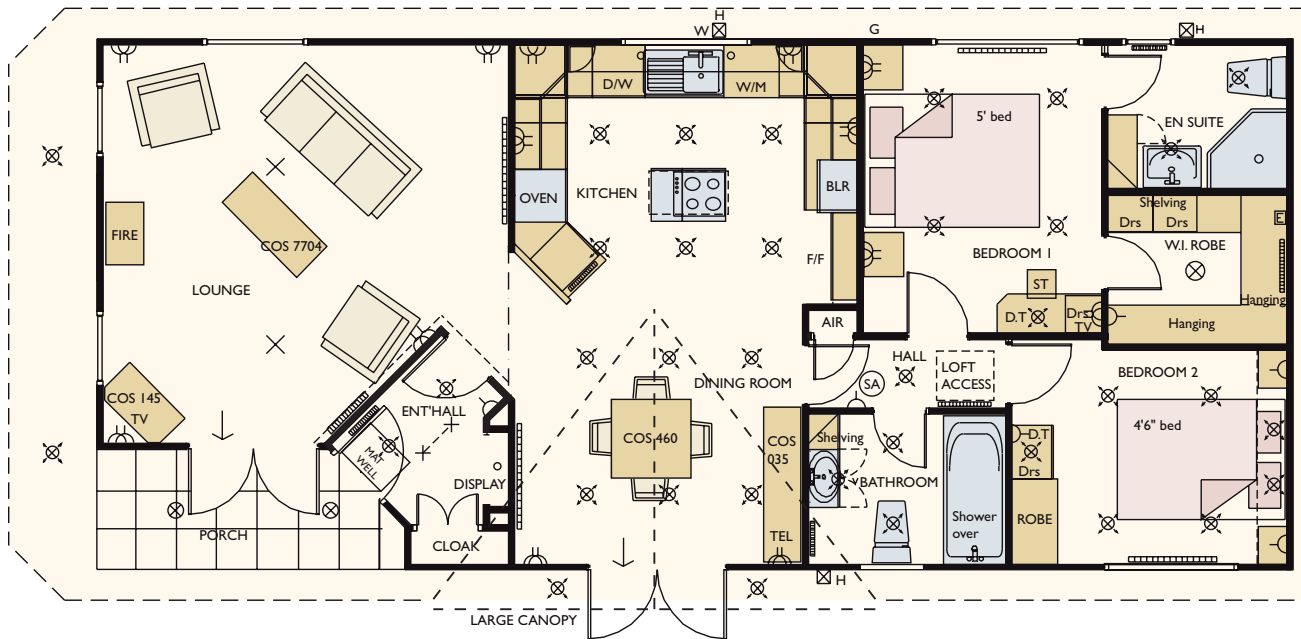
Overall size 12.95m x 6.15m (42'6" x 20'2") excluding roof

<b>Lounge</b>	4.39m x 4.52m (14'5" x 14'10")	<b>Dresser</b>	2.03m x 1.68m (6'8" x 5'6")	<b>En Suite</b>	2.03m x 1.65m (6'8" x 5'5")
<b>Dining</b>	2.87m x 3.02m (9'5" x 9'11")	<b>Bathroom</b>	2.23m x 1.70m (7'4" x 5'7")	<b>Entrance Hall</b>	1.74m x 2.15m (5'8" x 7'1")
<b>Hall</b>	2.23m x 0.80m (7'4" x 2'8")	<b>Bedroom 1</b>	2.70m x 3.28m (8'11" x 10'9")		
<b>Kitchen</b>	3.49m x 2.82m (11'5" x 9'3")	<b>Bedroom 2</b>	3.12m x 2.44m (10'3" x 8'0")		

Nominal sizes

# 44'6"

# the savannah



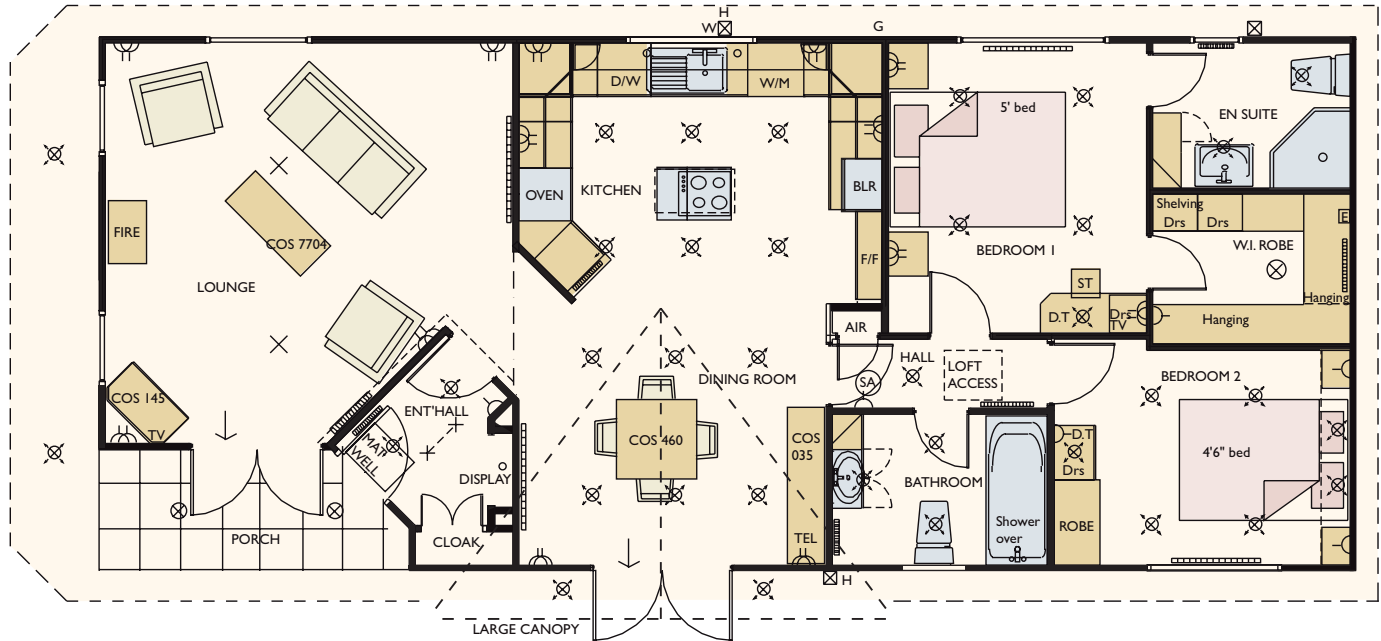
Overall size 13.56m x 6.15m (44'6" x 20'2") excluding roof

<b>Lounge</b>	4.61m x 4.52m (15'2" x 14'10")	<b>Dresser</b>	2.03m x 1.68m (6'8" x 5'6")	<b>En Suite</b>	2.03m x 1.65m (6'8" x 5'5")
<b>Dining</b>	3.27m x 3.02m (10'9" x 9'11")	<b>Bathroom</b>	2.23m x 1.70m (7'4" x 5'7")	<b>Entrance Hall</b>	1.74m x 2.15m (5'8" x 7'1")
<b>Hall</b>	2.23m x 0.80m (7'4" x 2'8")	<b>Bedroom 1</b>	2.70m x 3.28m (8'11" x 10'9")		
<b>Kitchen</b>	3.89m x 2.82m (12'9" x 9'3")	<b>Bedroom 2</b>	3.12m x 2.44m (10'3" x 8'0")		

Nominal sizes

# 46'6"

# the savannah



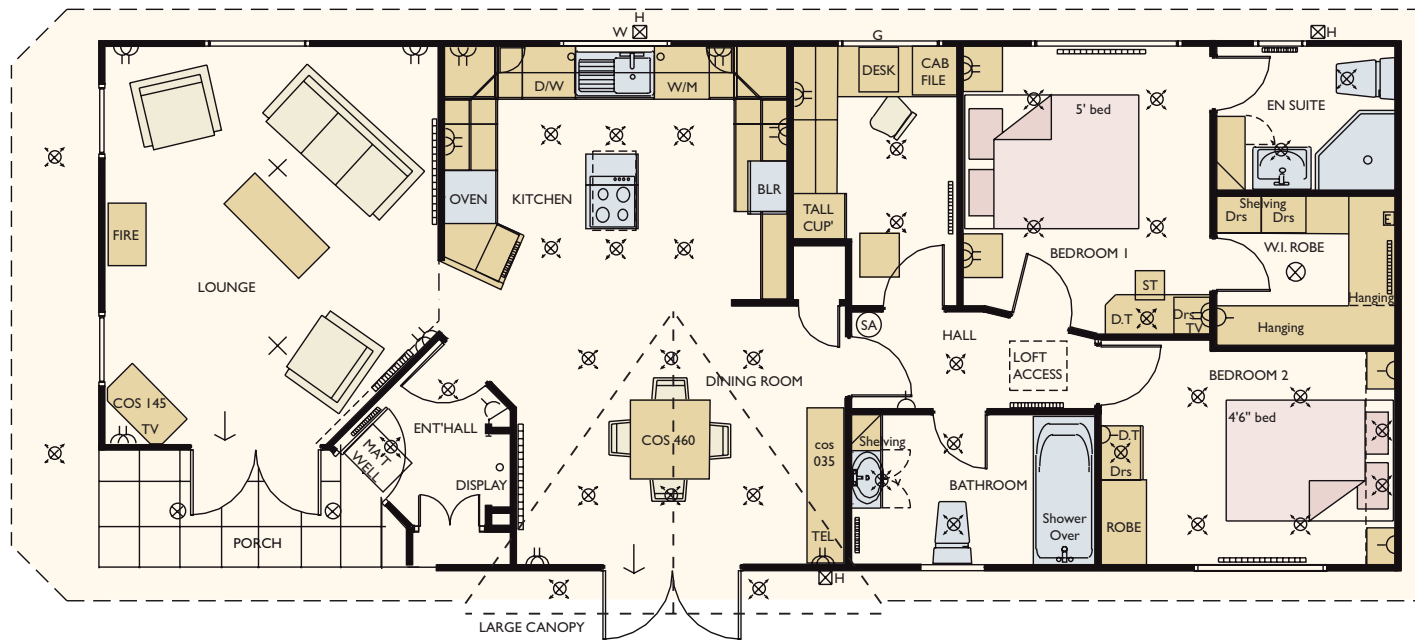
Overall size 14.17m x 6.15m (46'6" x 20'2") excluding roof

<b>Lounge</b>	4.61 x 4.52 (15'2" x 14'10")	<b>Dresser</b>	2.23 x 1.69 (7'4" x 5'7")	<b>En Suite</b>	2.23 x 1.64 (7'4" x 5'5")
<b>Dining</b>	3.47 x 3.02 (11'5" x 9'11")	<b>Bathroom</b>	2.43 x 1.70 (8'0" x 5'7")	<b>Entrance hall</b>	1.74 x 2.15 (5'8" x 7'1")
<b>Hall</b>	2.43 x 0.80 (8'0" x 2'8")	<b>Bedroom 1</b>	2.91 x 3.28 (9'7" x 10'9")		
<b>Kitchen</b>	4.08 x 2.82 (13'5" x 9'3")	<b>Bedroom 2</b>	3.34 x 2.42 (11'0" x 7'11")		

Nominal sizes

# 48'6"

# the savannah



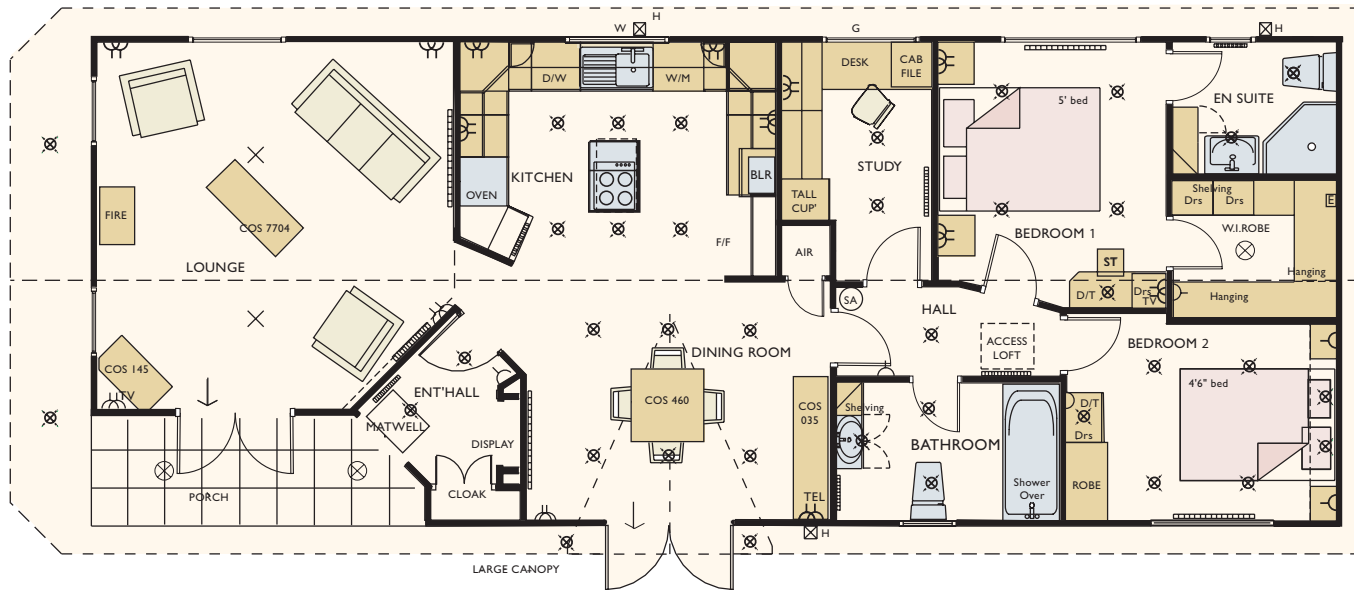
Overall size 14.78m x 6.15m (48'6" x 20'2") excluding roof

<b>Lounge</b>	3.76m x 4.52m (12'5" x 14'10")	<b>Dresser</b>	2.03m x 1.69m (6'8" x 5'7")	<b>Bedroom 2</b>	3.34m x 2.42m (11'0" x 7'11")
<b>Dining</b>	3.75m x 3.02m (12'4" x 9'11")	<b>Study</b>	1.85m x 2.96m (6'1" x 5'7")	<b>En Suite</b>	2.03m x 1.64m (6'8" x 5'5")
<b>Hall</b>	2.76m x 1.10m (9'1" x 3'7")	<b>Bathroom</b>	2.76m x 1.70m (9'1" x 5'7")	<b>Entrance Hall</b>	1.74m x 2.15m (5'8" x 7'1")
<b>Kitchen</b>	3.89m x 2.82m (12'9" x 9'3")	<b>Bedroom 1</b>	2.81m x 3.28m (9'3" x 10'9")		

Nominal sizes

# 50'6"

# the savannah



Overall size 15.39m x 6.15m (50'6" x 20'2") excluding roof

<b>Lounge</b>	4.40m x 4.52m (14'5" x 14'10")	<b>Dresser</b>	2.03m x 1.69m (6'8" x 5'7")	<b>Bedroom 2</b>	3.34m x 2.42m (11'0" x 7'11")
<b>Dining</b>	3.75m x 3.02m (12'4" x 9'11")	<b>Study</b>	1.85m x 2.96m (6'1" x 5'7")	<b>En Suite</b>	2.03m x 1.64m (6'8" x 5'5")
<b>Hall</b>	2.76m x 1.10m (9'1" x 3'7")	<b>Bathroom</b>	2.76m x 1.70m (9'1" x 5'7")	<b>Entrance Hall</b>	1.74m x 2.15m (5'8" x 7'1")
<b>Kitchen</b>	3.89m x 2.82m (12'9" x 9'3")	<b>Bedroom 1</b>	2.81m x 3.28m (9'3" x 10'9")		

Nominal sizes